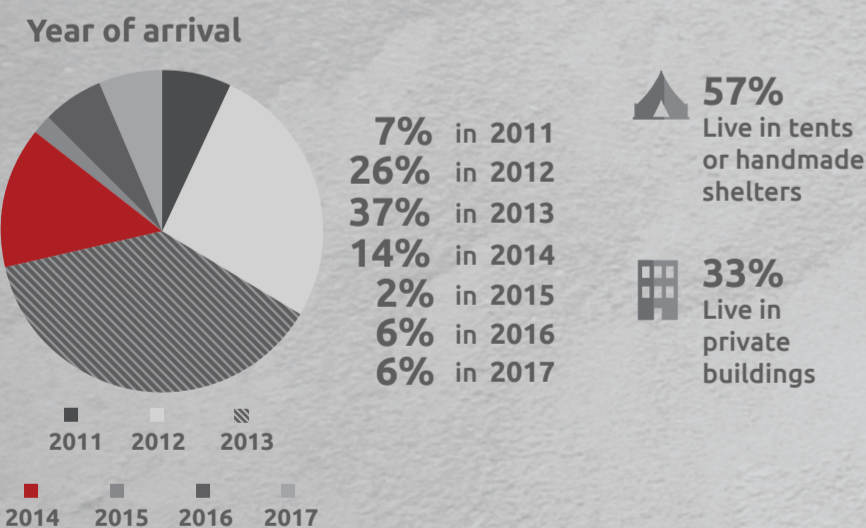
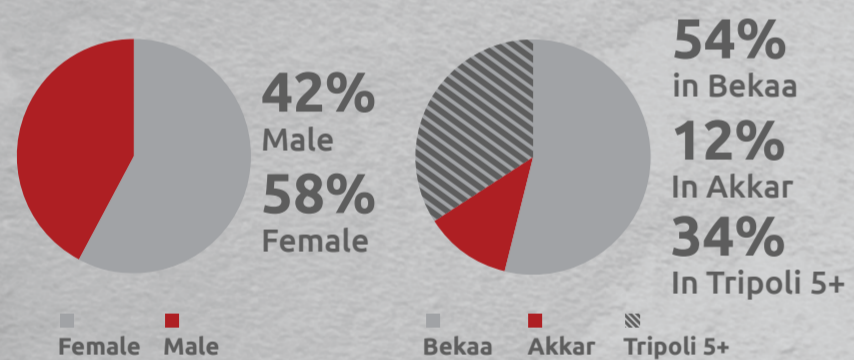


REFUGEE STASIS

NO WAY OUT FOR SYRIAN REFUGEES CAUGHT BETWEEN A WAR ZONE AND IRREGULAR STATUS IN LEBANON

Lebanon's legal regime for Syrian refugees has made daily life a constant struggle for the majority of refugees in the country. While Lebanon has permitted the vast majority of **Syrian refugees to stay in Lebanon**, it only allows certain segments of refugees to regularise their status if they **renew their residency every six months** for a fee of **200USD per person**, an amount similar to what an average refugee households spend on rent every month. DRC's **Monthly Protection Monitoring** finds that Syrian refugee's **irregular status** in Lebanon is the **genesis of a vicious poverty cycle**, leaving refugees increasingly vulnerable and aid-dependent. Until this reality changes, Syrian refugees in Lebanon remain in **perpetual stasis**, unable to find a way out of a **labyrinth of challenges** they face in the pursuit of a decent life until they are able to return to their homes.

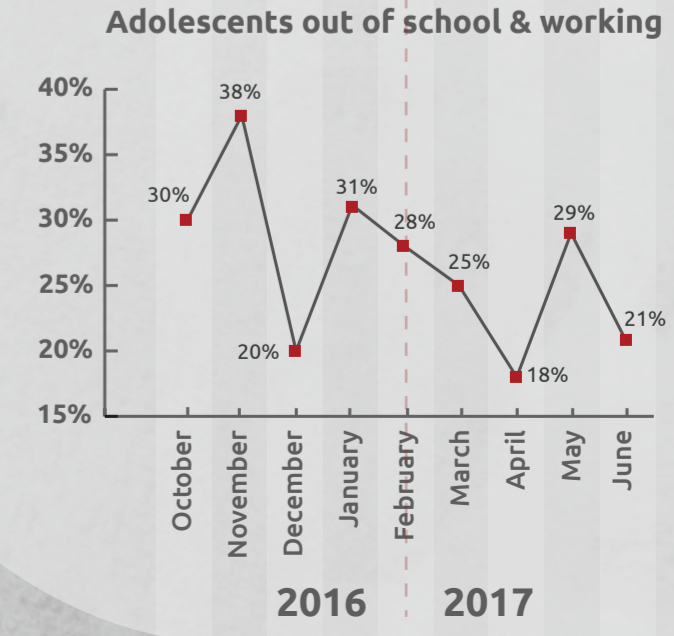
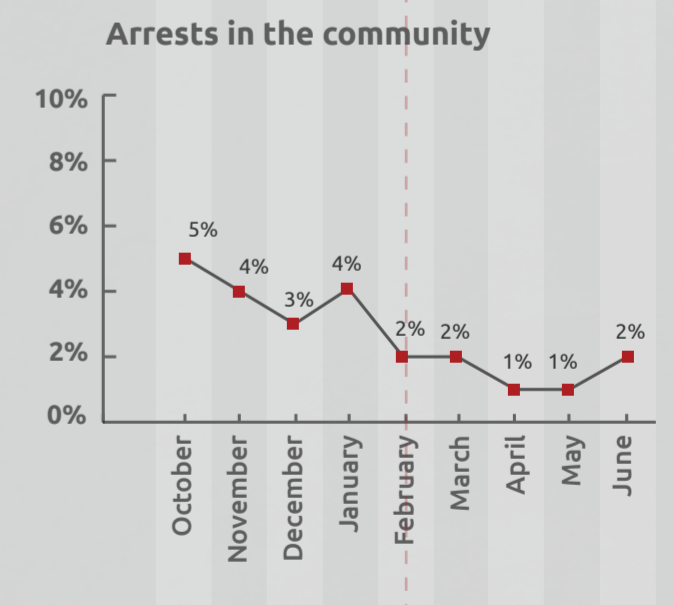
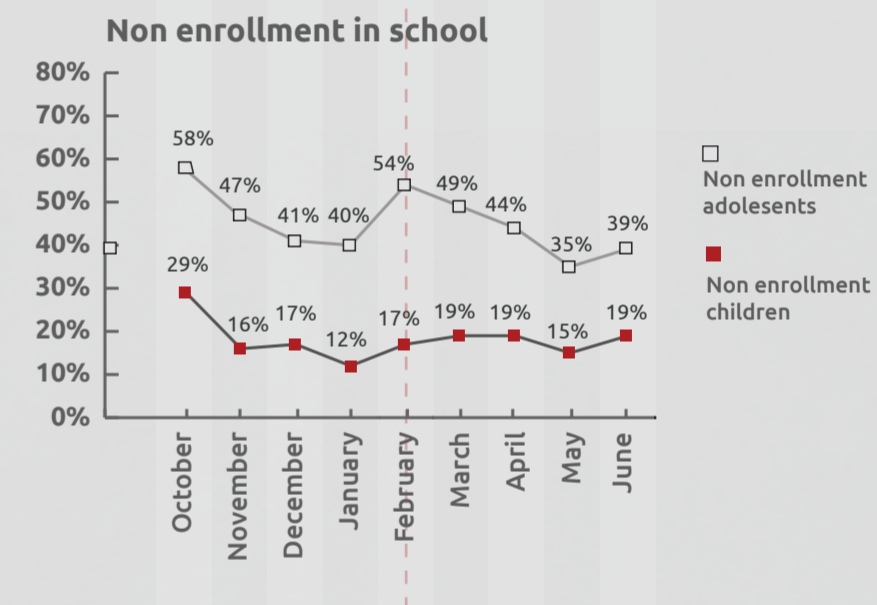
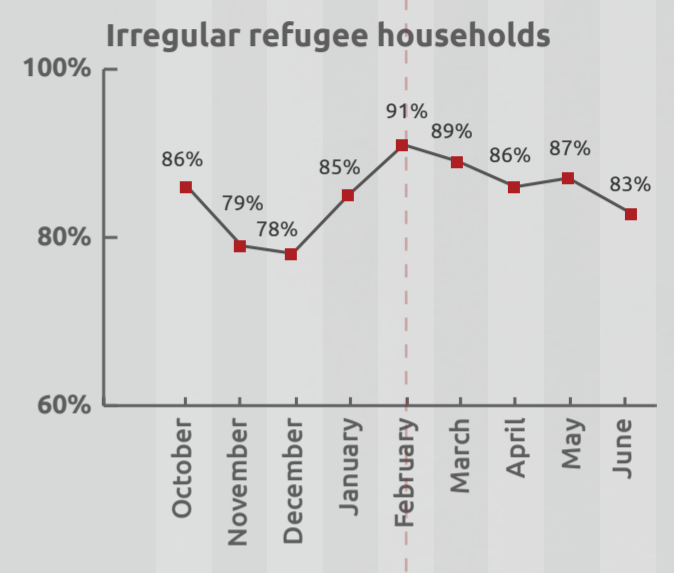
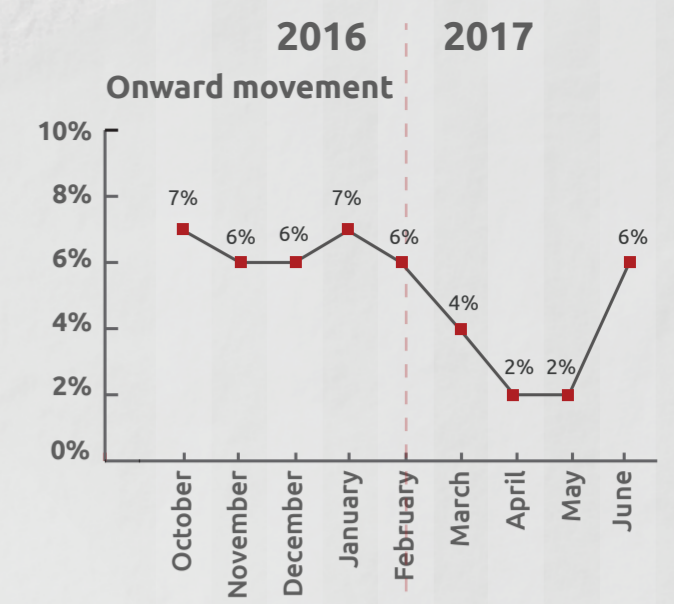
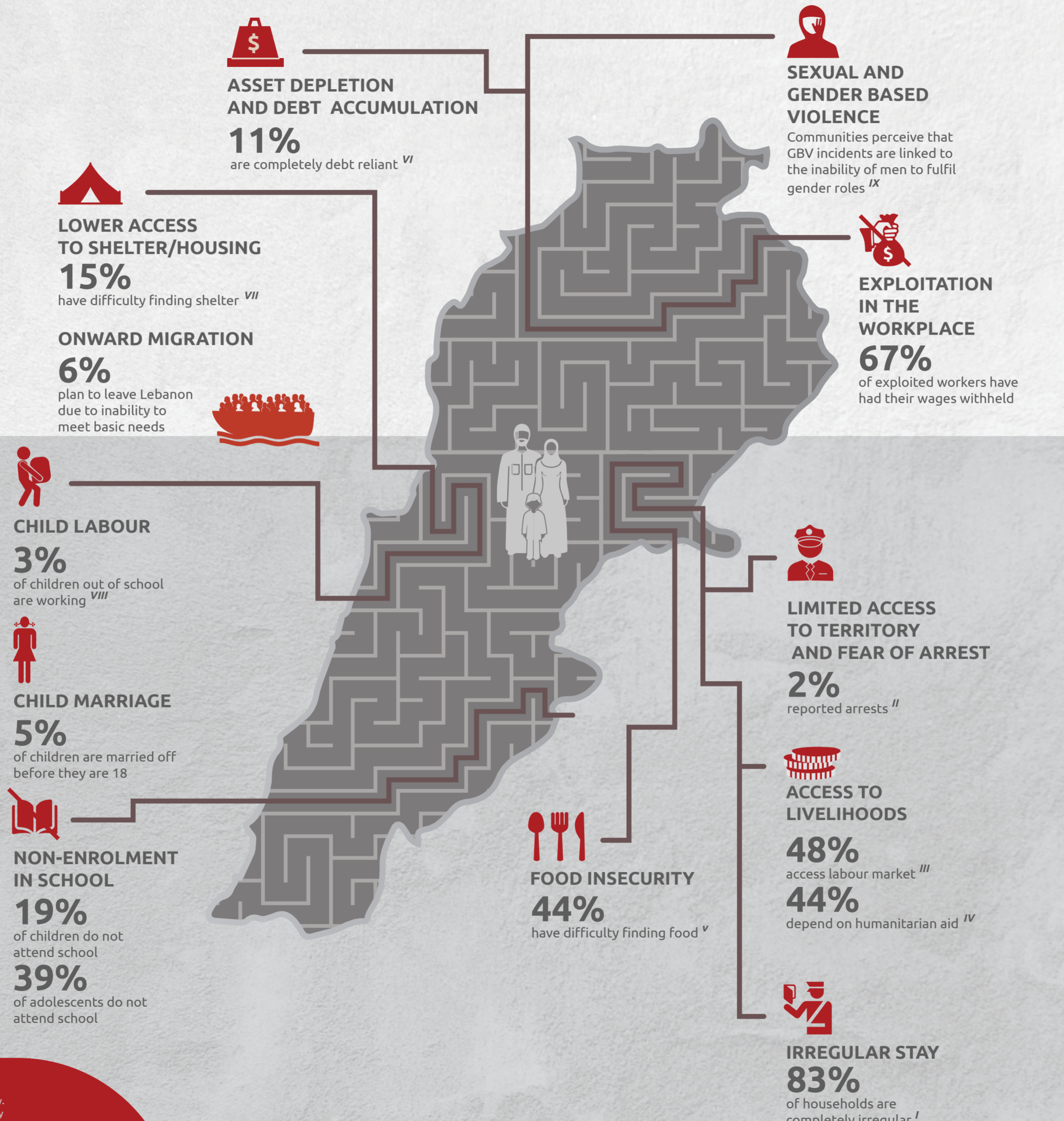
During the month of June 2017, DRC was able to collect quantitative information from 828 individuals, of whom:



1% of refugees arrived in Lebanon during the three months previous to the survey.

FOOTNOTES

- ^ICorresponds to refugee households where none of its members have established valid legal stay.
- ^{II}Corresponds to the refugees who state that members of their community have been arrested by Lebanese security forces in the past month.
- ^{III}Corresponds to refugees whose primary source of household income is daily labour.
- ^{IV}Corresponds to refugees whose primary source of household income is humanitarian assistance.
- ^VCorresponds to refugees who feel that food is either unavailable or hard to access.
- ^{VI}Corresponds to refugee households whose main source of income is debt.
- ^{VII}Corresponds to refugees who feel that shelter is either unavailable or hard to access.
- ^{VIII}Corresponds to refugee children who do not attend school because they must work to support their families.
- ^{IX}Based on information acquired from focus group discussions.



DANISH REFUGEE COUNCIL

Designed by TRIANGLE POLICY RESEARCH (PDR)

